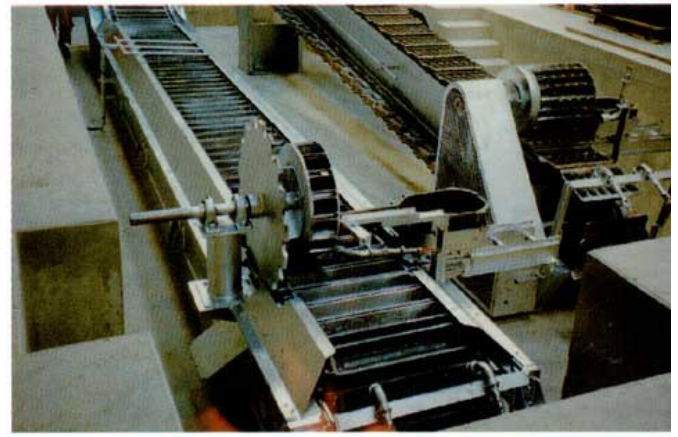
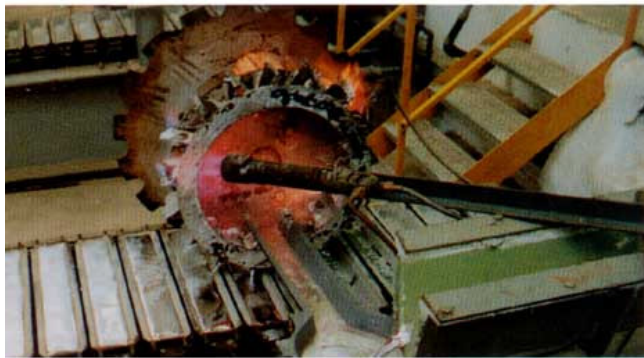


# AUTOMATIC CASTING SYSTEMS, DEGASSING AND ALLOYING UNITS FROM A TILTING FURNACE TO A CASTING LINE



▲ Automated casting line



▲ Line and automated knock-out







## TECHNICAL INFORMATION SHEET

4058 - 92/94

# AUTOMATIC CASTING MACHINE POURING SYSTEM

### APPLICATION

Metal smelters

### CAPACITY

From 120 to 220 ingot moulds  
Production : 1,5 tonne / hour to  
8 tonnes / hour of aluminium

### TYPES OF INGO CASTING LINES

- Step-by-step lines with automatic distribution pot
- Continuous lines with holding pot and synchronised casting wheel

All our casting lines are fitted with pre-heating burners on the casting wheel, distribution pot and moulds.

Our lines are complemented by spray or immersion cooling. Knock-out is by compressed air and may include the addition of hammers.



### AUTOMATIC POURING SYSTEM

The complete system is designed to work in conjunction with our casting lines.



An in-line filter box, between our tilting holding furnaces and the head of the casting line, provides metal filtration and controls the tilt of the furnace thus ensuring a regular flow of metal.

Also, this type of filter box allows for additions or elements such as calcium, phosphorus, sodium, etc... and can also be equipped with porous plugs for degassing operations.

Finally, to complete the automated casting system we have designed and built a prototype ingot stacking line for 7 kg ingots.



*For other mechanisms,  
please contact our head office.*