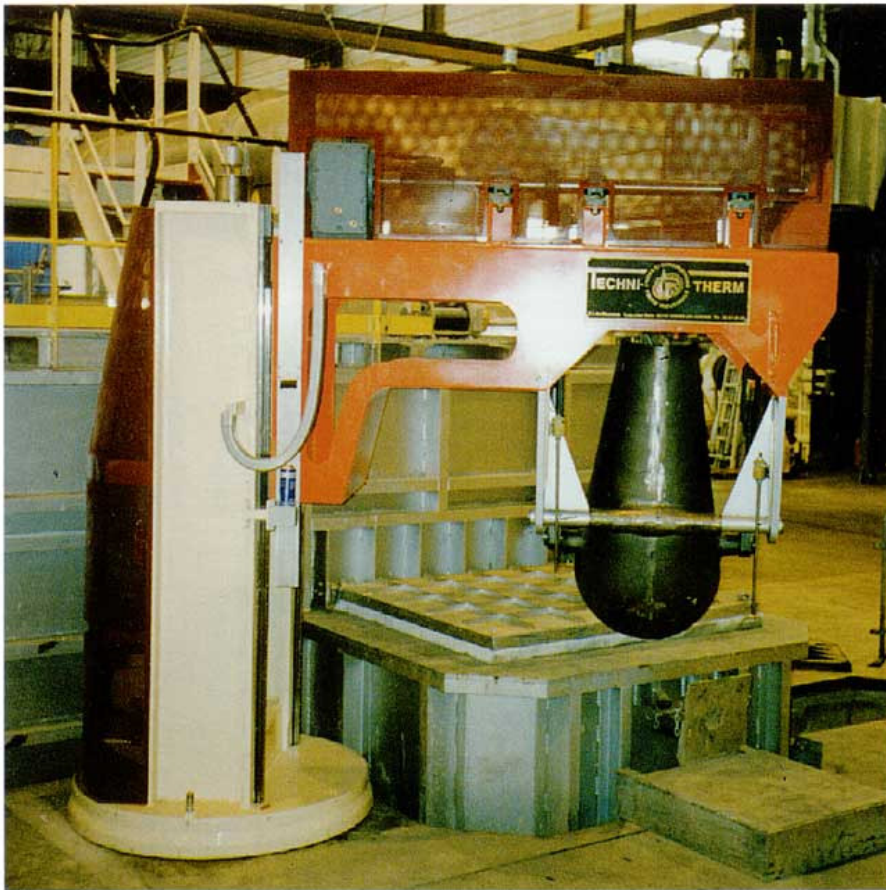


CASTING ROBOT



RC 200 E





POURING AND CASTING ROBOTS

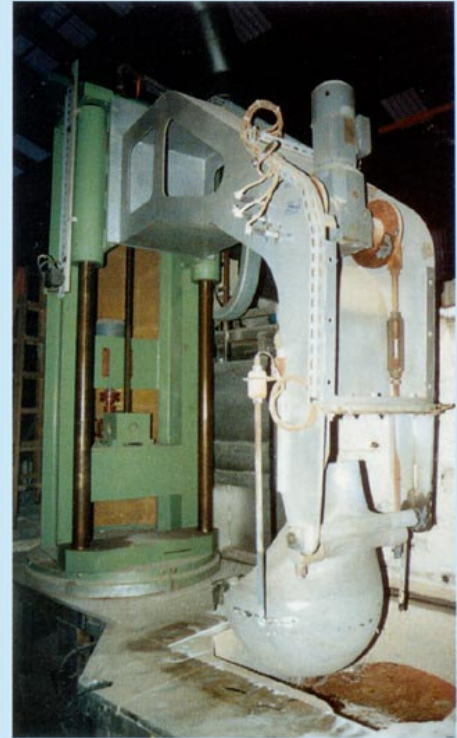
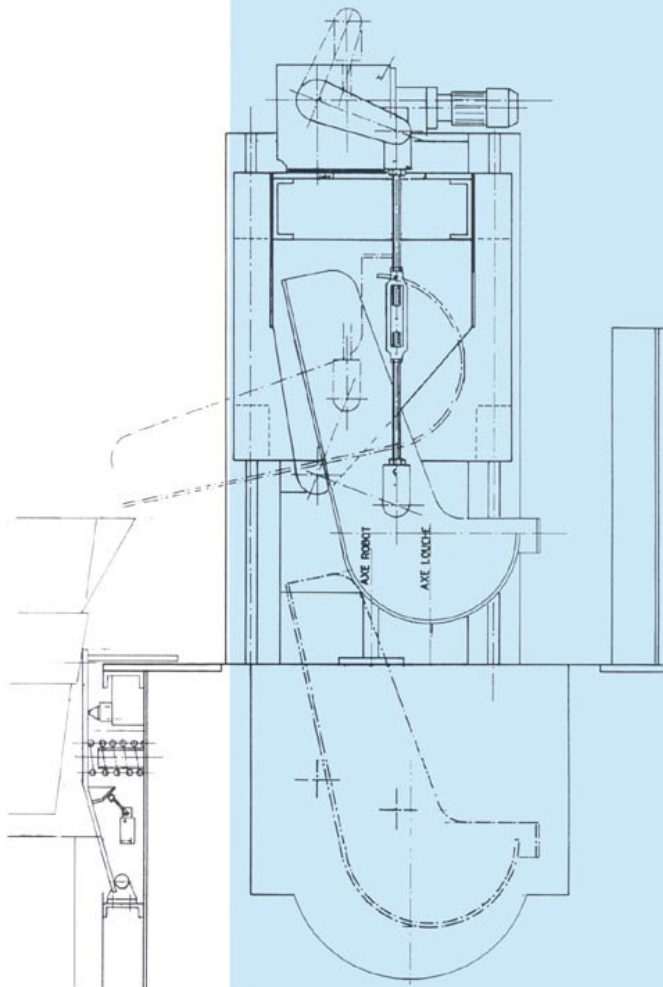
APPLICATION :

Foundries, Métal Smelters...

DESCRIPTION

This system, in its automated or semi automated configuration, is designed to feed molten metal to pressure die casting machines or transfer ladles (600/1000 kg capacity) in foundries. In metal smelting plants the system can be used to feed a casting line or to transfer metal from a melting furnace to a holding furnace without using gravity.

Robot ladle capacities vary from 15 kg to 200 kg of aluminium.



The system can be equipped with an automatic management system enabling the cast weight to be recorded and permitting control over furnace production.

The system is equipped with a transfer ladle detection device for added safety.

At present, out-put can be as much as 12,000 kg/hour in continuous mode.

ADVANTAGES

Complete safety in relation to tap-out holes

Supersedes tilting furnaces and eliminates the extra maintenance involved

All the benefits of a static furnace and still have the same casting capacity as a tilting unit

Eliminates the need for several tap-out holes on large furnaces

Simple civil works, non-existent in most cases.

*For other mechanisms,
please contact our head office.*