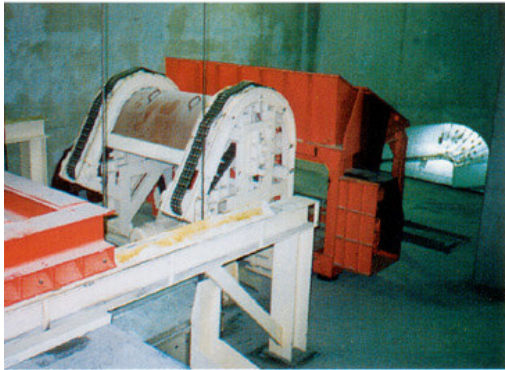


AUTOMATED CHARGING SYSTEM FOR FURNACES AND MELTING COMPARTMENTS



▲ Automated charging of 2 TT 4000 furnaces



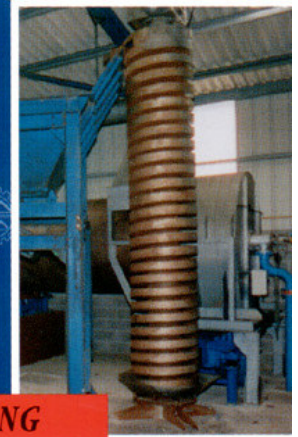
▲ Container tipper capacity 1m³ x 2

▼ Rotary furnace charger



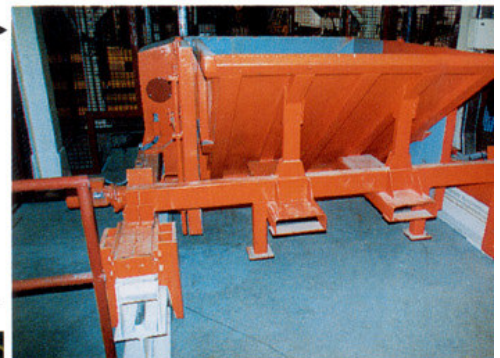
VIBRATING

Elevator ▶



▲ Automatic skip, bopper and charger

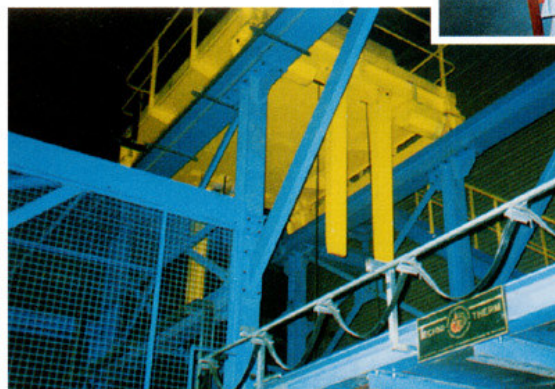
▶ Automatic motorised bopper



▼ 8000 kg crane



◀ Bomb door type charger and bin (capacity 8000 kg)





TECHNICAL INFORMATION SHEET :
4008 A 4011/91

FURNACE CHARGING SYSTEM

APPLICATION

Metal Smelters, Recycling Plants, Foundries.

CAPACITY

Adapted to the requirements and density of the charge.

ADVANTAGES

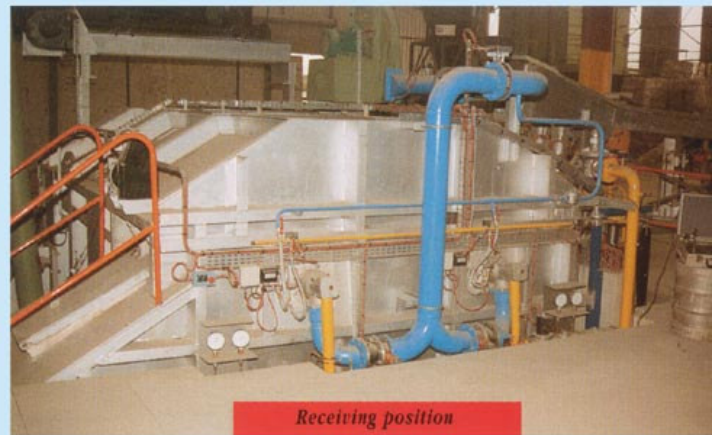
Efficient charging of melting furnaces, protection of linings. Ensures rational loading of melting compartments. May be used to charge several furnaces.

Within the same installation, it is possible to load the bin from several different levels : at floor level, with the bin resting on a special support platform and/or in a pit, below floor level, using a container tipper.

All these operations may be carried out either manually or automatically. It is possible to complement the charger with an automatic weighing system complete with printer incorporated in the control desk.



Casting position



Receiving position

DESCRIPTION

Our melting furnaces : TT 2000 to TT 4000 have a retractable roof cover that slides horizontally to provide access to the melting compartment. The charge is introduced into the furnace by the charging bin. The bin is fitted with «bomb» doors operated by motor-gearbox that opens the doors progressively to completely disengage the bottom of the bin.

The bin itself may be loaded by :

- conveyor
- fork-lift containers
- baskets with removable base
- hopper with «bomb» doors
- vibrating feed hopper
- container tipper

On the furnace model TT 4000, equipped with a bale-out casting robot and a metal management facility, it is possible to retrieve the following data :

- Charge weight
- Cast metal weight
- Metal yields

*For other mechanisms,
 please contact our head office.*